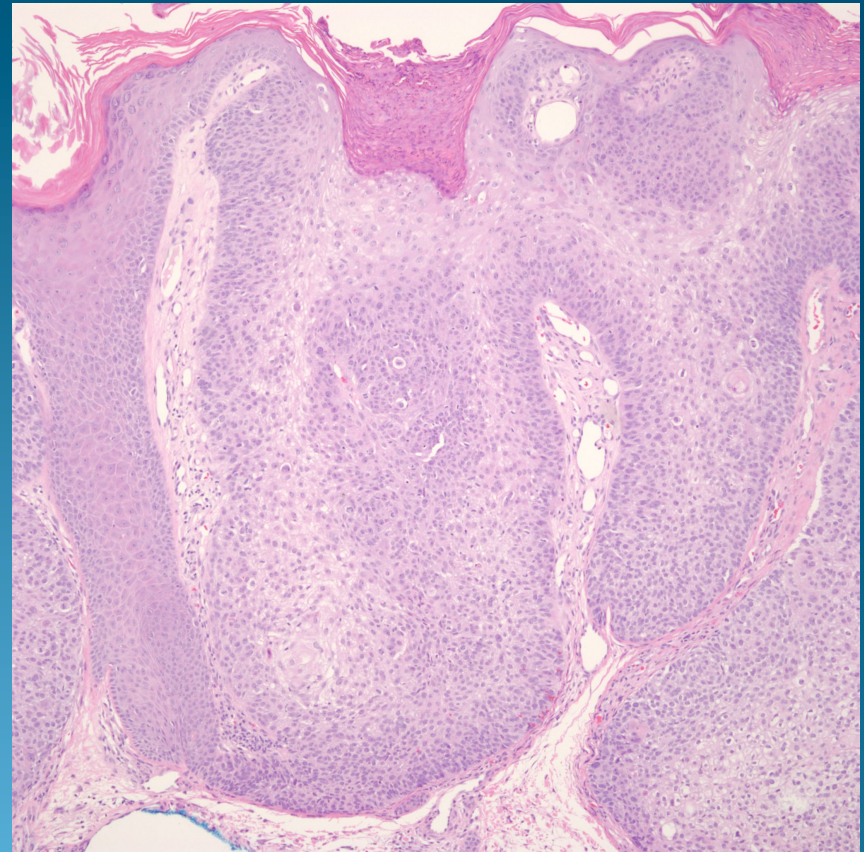
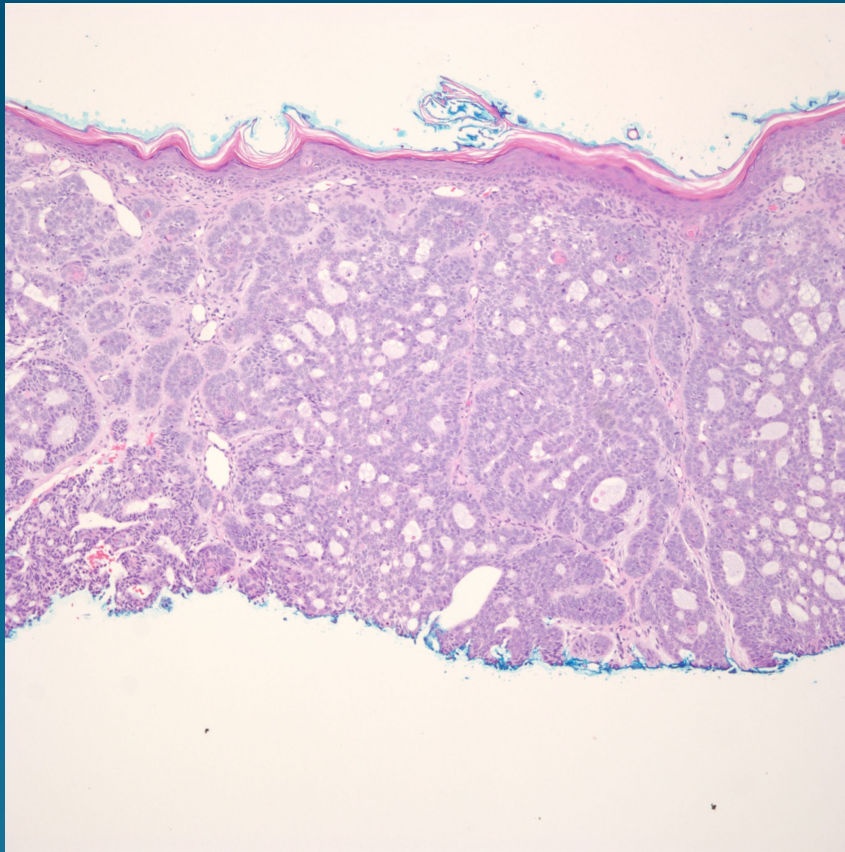
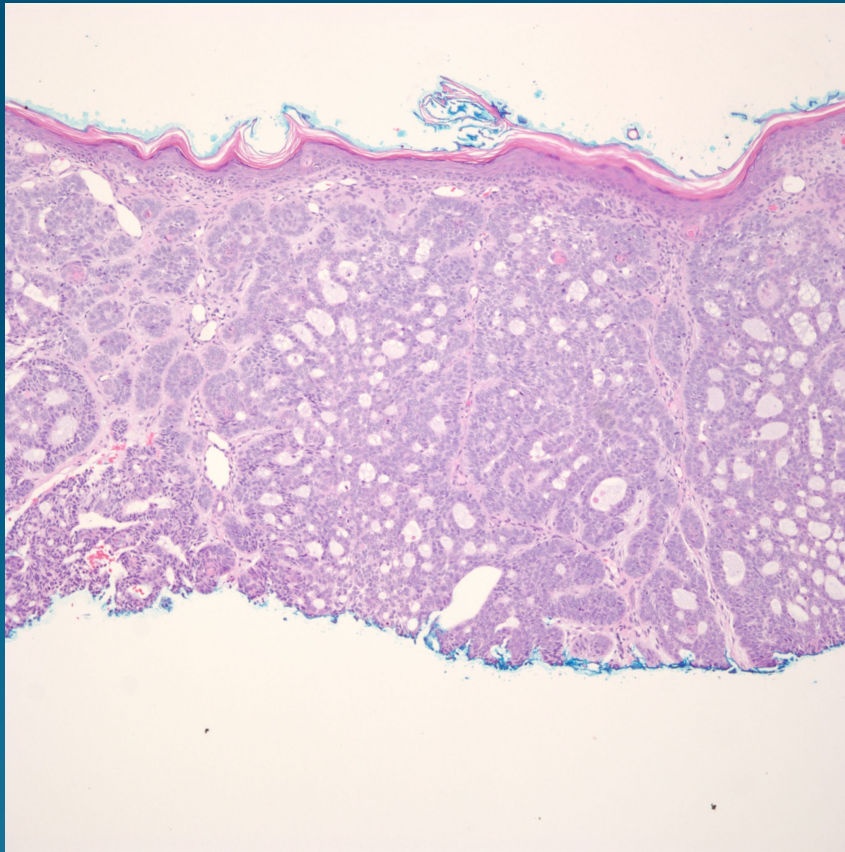


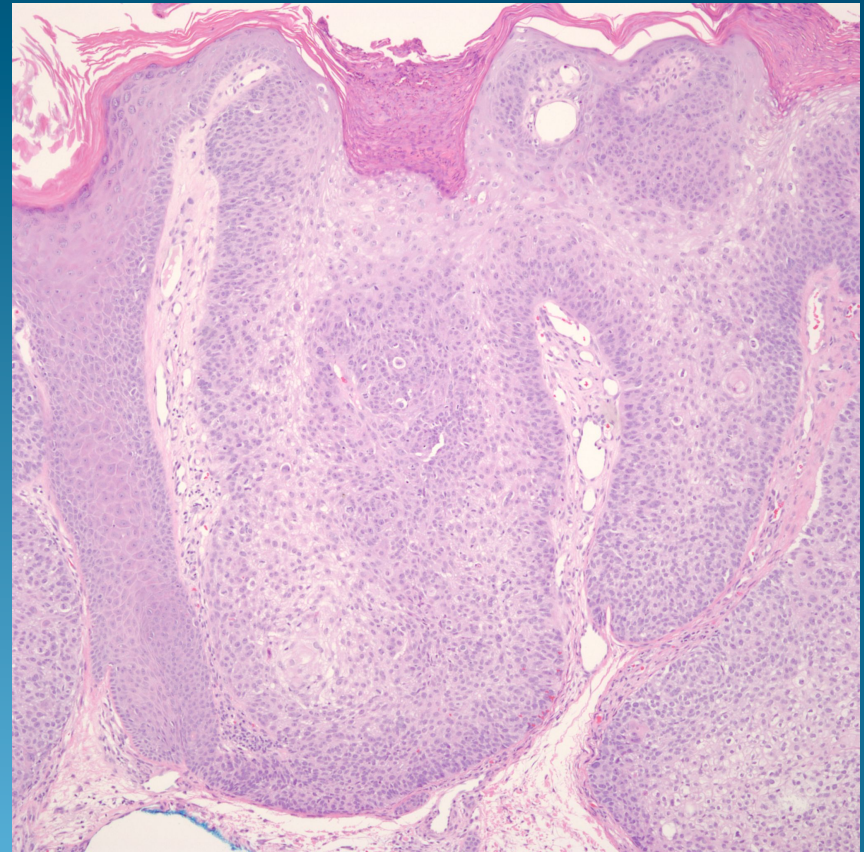
Basal cell carcinoma or Bowen's Disease?



BCC



Bowen's



Pearls

- Basal cell has nodular and cystic basaloid cells with peripheral palisading and stromal-tumor clefting
- Apoptotic cells and mitotic figures
- Bowen's disease has full thickness replacement of epidermis by atypical keratinocytes
- Loss of polarity, atypical mitotic figures, dyskeratotic cells